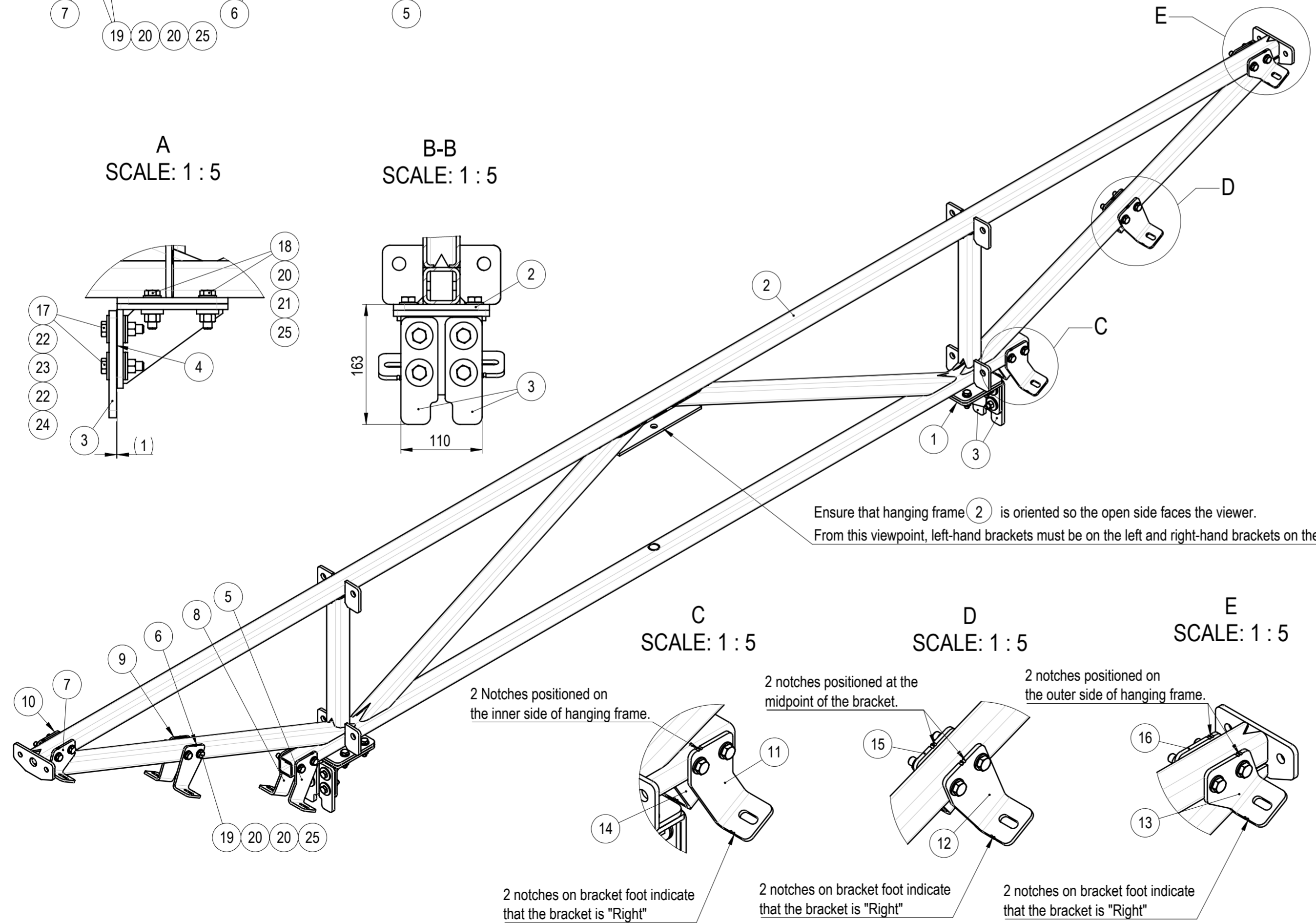
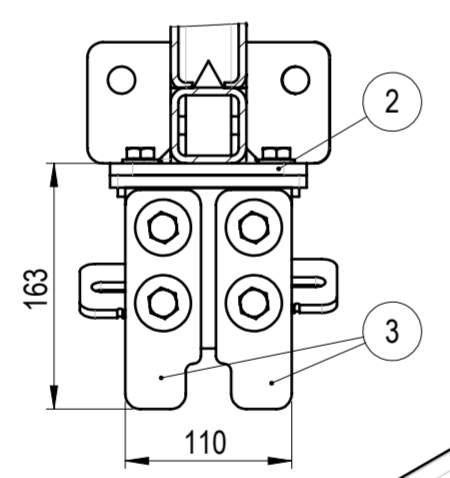
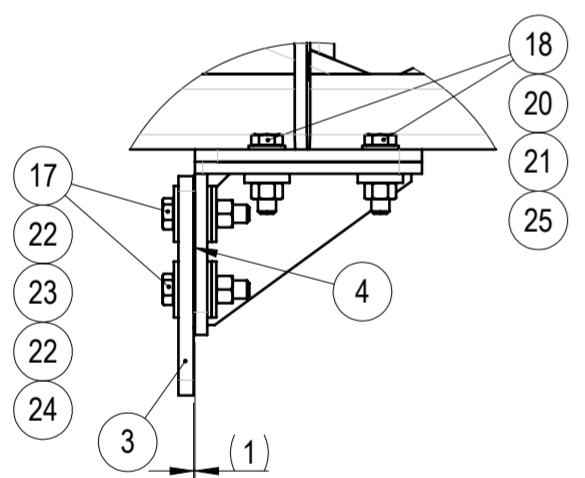


A
SCALE: 1 : 5

B-B
SCALE: 1 : 5



Ensure that hanging frame ② is oriented so the open side faces the viewer.
From this viewpoint, left-hand brackets must be on the left and right-hand brackets on the right!

C
SCALE: 1 : 5

D
SCALE: 1 : 5

E
SCALE: 1 : 5

2 Notches positioned on the inner side of hanging frame.

2 notches positioned at the midpoint of the bracket.

2 notches positioned on the outer side of hanging frame.

2 notches on bracket foot indicate that the bracket is "Right"

2 notches on bracket foot indicate that the bracket is "Right"

2 notches on bracket foot indicate that the bracket is "Right"

Bracket Positioning Note:

- Brackets ⑤; ⑥; ⑦; ⑧; ⑨; ⑩; ⑪; ⑫; ⑬; ⑭; ⑮ & ⑯ have notches for correct positioning.
- Bottom brackets have a notch located near the center of the hanging frame.
- Middle brackets have a notch positioned in the middle of the bracket.
- Top brackets have a notch on the outer side of the hanging frame center.
- Refer to detail views C, D, and E for notch positioning of right-side brackets.
- The notch positions for left-side brackets are identical in function and placement. The only difference is at the bracket foot: left brackets have 1 identification notch, whereas right brackets have 2 identification notches.

Fastening Note:

- For all fasteners, apply Loctite 243 during final assembly.

NO.	PART NO	DESCRIPTION	MATERIAL	PROCESSING	REVISION	WEIGHT	QTY
1	105-09216-00	Hanging frame bracket 1	-	WLD HDG		2.27	2
2	105-09222-00	Hanging frame weldment 2	-	WLD HDG		91.18	1
3	105-09100-01	Glass holding plate	AISI 304	LC		0.51	4
4	105-09100-02	Plastic shimplate 1mm	POM / black	MCH		0.01	4
5	105-09100-15	Left bracket 3L	S355J2	LCB HDG		0.57	1
6	105-09100-16	Left bracket 3M	S355J2	LCB HDG		0.55	1
7	105-09100-17	Left bracket 3U	S355J2	LCB HDG		0.42	1
8	105-09100-18	Left bracket 4L	S355J2	LCB HDG		0.58	1
9	105-09100-19	Left bracket 4M	S355J2	LCB HDG		0.56	1
10	105-09100-20	Left bracket 4U	S355J2	LCB HDG		0.43	1
11	105-09100-21	Right bracket 3L	S355J2	LCB HDG		0.57	1
12	105-09100-22	Right bracket 3M	S355J2	LCB		0.55	1
13	105-09100-23	Right bracket 3U	S355J2	LCB HDG		0.42	1
14	105-09100-24	Right bracket 4L	S355J2	LCB HDG		0.58	1
15	105-09100-25	Right bracket 4M	S355J2	LCB HDG		0.56	1
16	105-09100-26	Right bracket 4U	S355J2	LCB HDG		0.43	1
17	ISO4017 (DIN933) M12x50	Hex bolt	A2-70	COTS		0.06	8
18	ISO4017 (DIN933) M12x45	Hex bolt	HDG-8.8	COTS		0.06	8
19	ISO4017 (DIN933) M12x90	Hex bolt	HDG-8.8	COTS		0.10	12
20	ISO7089 (DIN125) M12	Plain Washer	HDG-HV200	COTS		0.01	32
21	DIN7349 M12	Thick washer	HDG-HV200	COTS		0.03	8
22	ISO7093 (DIN9021) M12	Large plain washer	A2-HV200	COTS		0.02	16
23	ISO7093 (DIN9021) M12	Large plain washer	Nylon	COTS		0.00	8
24	ISO4032 (DIN934) M12	Hex nut	A2-70	COTS		0.02	8
25	ISO4032 (DIN934) M12	Hex nut	HDG-8	COTS		0.02	20
26	Loctite 243	Threadlocking adhesive medium strength 3ml	-	COTS		0.00	1

WEMPS ENGINEERING SERVICES

MATERIAL: 107.362 Kg
SURFACE PROTECTION: ISO 2768 mK
MACHINING: ISO 9013 221
DEBURR AND BREAK SHARP EDGES: DO NOT SCALE DRAWING
THERMAL CUTTING: ISO 9013 221
WELDING: ISO 13920 BF

REVISION: 02.06.2025
SCALE: 1:10
FORMAT: A2

NAME: D. Dislers
SIGNATURE: [Signature]
PART NO.: 105-09212-00
DESCRIPTION: Hanging frame assembly 2

DESIGNED BY: D. Dislers
DRAWN BY: D. Dislers
TECHNICAL REF: [Blank]

SHEET 1/1